



## TUESDAY, SEPTEMBER 20, 2022

8:00 - 5:00	<b>PRE-CONFERENCE WORKSHOPS</b> (pre-registration required)
4:00 - 7:00 Atrium	<b>CONFERENCE REGISTRATION</b>
6:00 - 7:30 Ballroom 3 & 4	<b>POSTER SESSION 1 AND RECEPTION</b>

## WEDNESDAY, SEPTEMBER 21, 2022

6:20 - 7:20	<b>FUN RUN / WALK</b> Meet in Lobby
8:00 - 4:30 Atrium	<b>CONFERENCE REGISTRATION</b>
8:30 - 10:30 Ballroom 1 & 2	<b>PLENARY 1</b> <b>Session Chair: Kathleen Mullan Harris, University of North Carolina at Chapel Hill</b> Presidential Remarks: Roland J. Thorpe, Johns Hopkins Bloomberg School of Public Health J. Michael McGinnis Excellence in Leadership Winner: Sandro Galea, Boston University
	<b>Invited Panel 1: "The Questions We Ask"</b> <b>Panel Chair: Roland J. Thorpe, Johns Hopkins Bloomberg School of Public Health</b> Panel Moderator: Rae Anne Martinez, University of North Carolina, Chapel Hill Speaker: Eduardo Bonilla-Silva, Duke University
10:30 - 11:00	<b>BREAK</b>
11:00 - 12:15	<b>PANEL SESSION 1</b>
Deer Lake	<b>Biosocial approaches to examining population health equity: Results from the Fragile Families and Child Wellbeing Study</b> <b>Session Co-Chair: Helen Meier, University of Michigan</b> <b>Session Co-Chair: Lauren Gaydosh, University of Texas at Austin</b> Introduction to the Fragile Families and Child Wellbeing Study (Colter Mitchell) Demographic and Developmental Correlates of DNA Methylation Age Change During Adolescence: A Comparison of 8 Epigenetic Clocks (Kalsea Kloss) Beaten Down by Beating the Odds (Lauren Gaydosh) The Epigenetic Aging Signature of Sleep and Sleep Deprivation (Edward Huntly) The Epigenetic Aging Signature of Sleep and Sleep Deprivation (Jonah Fisher) Childhood food insecurity and epigenetic clocks (Helen C.S. Meier)
11:00 - 12:15 Ballroom 1	<b>Gentrification and Health Equity</b> <b>Session Co-Chair: Rahwa Haile, SUNY Old Westbury and Brooklyn Movement Center</b> <b>Session Co-Chair: Danya Keene, Yale School of Public Health</b> The impacts of gentrification-induced displacement on health: A concept mapping study (Shannon Whittaker) Linking Displacement Pressure and Mental Health: A Theoretical Framework (Marisa Westbrook) Racial Resegregation and Preterm Birth in Northern California (Rebekah Israel Cross) The Epigenetic Aging Signature of Sleep and Sleep Deprivation (Edward Huntly) Hypertension and Diabetes Control among Residents of Newly Gentrifying Neighborhoods in Los Angeles County (Katherine Chen)

11:00 - 12:15 Ballroom 2	<p><b>Multiple Morbidities, Mortality, and Health Inequities in the U.S. in Context of COVID-19</b>  <b>Session Co-Chair: Silvia Martins, Columbia University Mailman School of Public Health</b>  <b>Session Co-Chair: Kelli Stidham Hall, Columbia University Mailman School of Public Health</b></p> <p>Trends and Disparities in SARS-CoV-2 Severity and Maternal Morbidity Among a National Hospital-based Sample of Perinatal Patients in the U.S. (Kelli Stidham Hall)</p> <p>Influence of race/ethnicity and a substance use disorder on 30-day readmission rates in patients hospitalized with COVID-19 (Aize Cao)</p> <p>Cigarette smoking among middle aged and older adults in the context of COVID-19: Health equity implications for racial/ethnic minoritized groups in the US (Pia M. Mauro)</p> <p>The relationship of state-level unemployment insurance with unintentional drug overdoses before and during the COVID-19 pandemic (Silvia S. Martins)</p>
11:00 - 12:15 Elk Lake	<p><b>The role of neighborhoods in aging and health</b>  <b>Session Co-Chair: Michael Esposito, Washington University in St. Louis</b>  <b>Session Co-Chair: Jessica Finlay, University of Michigan</b></p> <p>The Embodiment of the Neighborhood Environment in the Architecture of the Immune System (Grace Noppert)</p> <p>Cognability: A New Interdisciplinary Theory of Neighborhoods and Cognitive Health in Later Life (Jessica Finlay)</p> <p>Community Livability and Dementia Prevalence by Race/Ethnicity among South Carolina Counties (Dana Alhasan)</p> <p>State-Level Social Exclusion and Mexican-American Health across the Life Course: The Moderating Role of Neighborhood Social Support (Megan Reynolds)</p>
11:00 - 12:15 Excelsior Bay	<p><b>Virtual Audits, Neural Networks and Street View Images: Measuring the Built Environment for Population Health Equity Research</b>  <b>Session Chair: Alex Quistberg, Urban Health Collaborative, Drexel University</b></p> <p>What is really going on here? Deciding what should be included in a Street View audit protocol and instrument (Stephen Mooney)</p> <p>Examining rater bias in virtual audits of street view images (Dustin Fry)</p> <p>Measuring Built Environment Inequities with Neural Networks and Street View Images (Alex Quistberg)</p>
12:15 - 1:30	<b>LUNCH (on your own)</b>
12:30 - 1:30 Gray/ Wayzata Bay	<p><b>A Conversation Café on Advancing Race and Social Justice Work within IAPHS</b>  <b>Session Chair: LaToya J. O'Neal, University of Florida</b>  <b>Session Chair: Marino A. Bruce, University of Houston</b></p>
12:30 - 1:30 Ballroom 1	<p><b>Student Networking Event</b>  <b>Session Chair: Julene Cooney, Syracuse University</b>  <b>Session Chair: Sandte Stanley, Washington State University</b>  <b>Session Chair: Akilah Collins-Anderson, Washington University in St. Louis</b></p>
1:30 - 2:45 Deer Lake	<p><b>ABSTRACT CONCURRENT SESSION 1</b></p> <p><b>Cognitive Aging &amp; Disability</b>  <b>Session Chair: Marc Garcia, Syracuse University</b></p> <p>Exploring the Association Between Discrimination and Cognitive Functioning in Older Adults (Heather Farmer)</p> <p>A Functional Form of the Association between Education and Dementia in the United States (Hyungmin Cha)</p> <p>Caregiver Burden and Unmet Resource Needs Among Caregivers of People Living with Dementia (Jennifer Makelarski)</p> <p>Unpacking the mechanisms of health inequities among community dwelling older adults with mobility disabilities: An investigation of the role of mobility devices and household barriers in residential relocation (Marielle Jensen-Battaglia)</p> <p>Rural/Urban Differences in Unmet Needs for Mobility Limitations among Older Adults Aging in Place (Carrie Henning-Smith)</p>
1:30 - 2:45 Ballroom 1	<p><b>Health Equity Frameworks and Research</b>  <b>Session Chair: Kathleen Harris, University of North Carolina at Chapel Hill</b></p> <p>Racial/ethnic discrimination and hypertension risk among a diverse cohort of US women: Do relationships vary by race/ethnicity and educational attainment? (Symielle Gaston)</p> <p>Do black women residing in cities have a higher prevalence of invasive hysterectomy than those living in the rest of the state compared to white women? (Felicia Pugh)</p> <p>The Diabetes Health Plan and Medication Adherence Among Individuals with Low Incomes:  A Quasi-experimental study (Kimberly Narain)</p>
1:30 - 2:45 Excelsior Bay	<p><b>Mental Health Disparities In Context and The Important Role of Social Connectedness</b>  <b>Session Chair: Stephani Cook, New York University</b></p> <p>Depression, Anxiety and Delayed Contraceptive Care among Community College Students (Cynthia Harper)</p> <p>Mental Health Disparities Between Female Sexual Minority and Heterosexual Youth With Substance Use Disorders and Who Are Experiencing Homelessness (Allen Mallory)</p> <p>COVID-related Disruptions to School-based Social Connections and Child Mental Health in the Conditions Affecting Neurocognitive Development and Learning in Early Childhood (CANDLE) Study (Jessica Arizaga)</p>

1:30 - 2:45 Ballroom 2	<b>Structural Injustice and Health</b> <b>Session Chair: Patricia Homan, Florida State University</b> LGB-specific state-level policies are associated with improved prenatal care access for sexual minority women. (Bethany Everett) Philanthropic Efforts to Create a Culture of Health Through Bail Reform (Cynthia Golembeski) Structural barriers to health care and preterm birth odds for Black women (David Curtis) Examining Multilevel Risk Factors and Perceived Discrimination as a Mediator of Cardiometabolic Comorbidities by Race/Ethnicity, Rurality, and Socioeconomic Status among U.S. Adults (LaToya O'Neal)
1:30 - 2:45 Elk Lake	<b>The Covid-19 Pandemic, Coping Responses, and Impact on Population Health</b> <b>Session Chair: Steven Woolf, VCU Center on Society and Health</b> Health-related social risks and increased smoking early in the pandemic: Role of mental health difficulties (Victoria Winslow) Neighborhood Greenspace Associated with Decreased Obesity during COVID-19 (Stephanie Mayne) Gender and Sexual Identity Disparities in COVID-19 Coping Patterns (Laura Houghtaling) Trends in Child and Adolescent Vaccine Administration Before and During the COVID-19 Pandemic (Nicole Hair) Social Impacts of the COVID-19 Pandemic among Young Adults: Longitudinal Evidence and Inequalities by Gender, Socioeconomic Position, and Race (Thomas Fuller-Rowell)
2:45 - 3:15	<b>BREAK</b>
3:15 - 4:30	<b>ABSTRACT CONCURRENT SESSION 2</b>
Ballroom 1	<b>Pathways to Inequality: Structural Racism and the Production of Population Health</b> <b>Session Chair: Mike Esposito, Washington University in St. Louis</b> Incarceration and Psychiatric Emergency Department visits among Black Americans, 2006-2015 (Abhery Das) Internalized Colorism and Psychobiological Distress among Black Americans (Alexis Dennis) Racial Disparities in Mortality During the 1918 Influenza Pandemic in United States Cities (Elizabeth Wrigley-Field) Implications Of Redlining Methods: A Systematic Review Of Adverse Outcomes (Janelle Edwards)
3:15 - 4:30 Elk Lake	<b>Place-based structural racism and health</b> <b>Session Chair: Helen Meier, University of Wisconsin-Milwaukee</b> Density zoning laws and health disparities among metropolitan older adults (Kate Strully) Structural Racism and Disadvantage in School Contexts and Depressive Symptoms in Adolescence: The Development and Validation of Indices for Use in the National Longitudinal Study of Adolescent to Adult Health (Jessica Polos) Persistent poverty area residence as a risk factor for unmet social needs among African American cancer survivors (Theresa Hastert) Investigating homicide disparities through a spatial intersectionality lens (Mudia Uzzi)
3:15 - 4:30 Deer Lake	<b>Policy, Politics, and Health Impacts: From Global to Local</b> <b>Session Chair: Keshia Pollack Porter, Health Policy Research Scholars</b> Leveraging Medicaid to Enhance School Mental Health Services and Supports (Vinu Ilakkuvan) Covering child care during COVID: analysis of local television news coverage of child care from March thru May of 2020 (Margaret Tait) The Affordable Care Act & Allostatic Load: Improved Health of Those Living in States with 2014 ACA Medicaid Expansion (Anna Shetler) The Impact of State-Level Policy Barriers on the Mental Health of Men with Criminal Records (Kaitlyn Berry) The Effect of Policy Overlap on Migrant Health: A European Cross-National Examination, 2010-2018 (Zachary Franzoni)
3:15 - 4:30 Ballroom 2	<b>The Social Context of Health Equity</b> <b>Session Chair: Trace Kershaw, Yale University</b> Men's knowledge of pregnancy, gender-equitable attitudes and involvement during pregnancy (Francine Wood) Associations of Gendered Racial Discrimination and Psychosocial Stress in Black US Women: A Mixed Studies Systematic Review (Ashley Cooper) Pandemic Retelling: What GoFundMe Posts Reveal about the Social Context of COVID-19 Deaths in Latinx & Spanish-speaking Communities in the U.S. (Alicia Riley) Fostering Inclusion and Belonging: Learning from Local Communities (Olivia Little)
3:15 - 4:30 Excelsior Bay	<b>Topics in health care and health care services</b> <b>Session Chair: Ellesse Akre, Dartmouth University</b> Does the PCMH Increase the Rate of Preventive Service Use among Rural Women Aged 50-65? (Bobbie Johannes) Stigma versus Need: The Relationship between Body Weight and Annual Primary Healthcare Visits (Lauren Newmyer) Spatial Analysis of Emergency Medical Services by Entity Types and Mortality in Texas (Megumi Tanabe) Pathways to the Profession: Gender, Nativity, and Country of Medical Education Disparities in Selection into U.S. Medical Practice (Rebecca Anna Schut)
5:00 - 6:30 Ballroom 3 & 4	<b>POSTER SESSION 2 AND RECEPTION</b>

**THURSDAY, SEPTEMBER 22, 2022**

7:30 - 8:00 Excelsior Bay	<b>Funding priorities and grant opportunities at the William T Grant Foundation</b> <b>Session Chair: Lauren Supplee, William T. Grant Foundation</b>
8:00 - 4:30 Atrium	<b>CONFERENCE REGISTRATION</b>
8:00 - 9:00 Ballroom 1 & 2	<b>MEMBERSHIP MEETING</b>
9:00 - 10:30 Ballroom 1 & 2	<b>PLENARY 2</b> <b>Session Chair: Roland J. Thorpe, Johns Hopkins Bloomberg School of Public Health</b> Public Engagement Award Winner: Elizabeth Wrigley-Field, University of Minnesota, Twin Cities
	<b>Invited Panel 2: "What We Measure and How We Do It"</b> <b>Panel Chair: Sean Valles, Michigan State University</b> Panel Moderator: Connor Martz, UT-Austin Panel Speaker: Leah McClimans, University of South Carolina Panel Speaker: Alyasah Ali Sewell, Emory University
10:30 - 11:00	<b>BREAK</b>
11:00 - 12:15 Deer Lake	<b>ABSTRACT CONCURRENT SESSION 3</b> <b>Health-Related Behaviors: Potential Determinants and Interventions</b> <b>Session Chair: Richard Carpiano, University of California, Riverside</b> Dietary behavior during COVID-19 restrictions: an analysis of food purchase patterns in North Carolina (Aline D'Angelo Campos) Results of an intervention to improve self-efficacy in vaccine conversations among Wisconsin early care and education providers (Amanda Simanek) The Effects of Universal Cash-Transfers on Breastfeeding Initiation and Continuation (Sarah Cowan) Los Inmigrantes También Comen: A Qualitative Photovoice Exploration of Survival and Coping Strategies Among Undocumented Latinx Immigrants in Texas During the COVID-19 pandemic (Marcela Nava) Serving the public? Content analysis of public service announcements (PSAs) about COVID-19 airing in 2020 (Margaret Tait)
11:00 - 12:15 Elk Lake	<b>Narrative and Messaging Strategies to Advance Population Health and Health Equity: Promise and Limitations</b> <b>Session Chair: Sarah Gollust, University of Minnesota</b> The effects of maternal health narratives on public beliefs about the causes for racial health inequities and public support for social policies (Hawi Teizazu) The role of political ideology on immigrant preferences and welfare access (Cesar Vargas Nunez) Building Consensus on Calls to "Defund the Police" Among Key Stakeholders in U.S. Cities (Daniel Schober) Persuasion Nation? U.S. Overreliance on Educational Strategies to Promote Population Health (Mark Wolfson)
11:00 - 12:15 Ballroom 1	<b>Racism and Health across the Life Course</b> <b>Session Chair: Taylor Hargrove, University of North Carolina at Chapel Hill</b> Relationship Between Child Well-Being and Structural Racism at the County Level (Nathaniel Anderson) The Health Consequences of U.S. Criminal Justice Contact: The Role of Race and Ethnicity (Michael Niño) The COVID-19 Pandemic and Race/Ethnic Variation in U.S. States' Life Expectancy Declines in 2020 (Iliya Gutin) Misracialization of American Indian and Indigenous Americans in population health studies: A scoping review to establish promising practices (Danielle Gartner) Racialized Stress, Coping, and Mental Health Among African Americans (Dawne Mouzon)
11:00 - 12:15 Ballroom 2	<b>Socioeconomic Status and Health over the Life Course</b> <b>Session Chair: Elizabeth Lawrence, University of Nevada, Las Vegas</b> Socioeconomic status and immune aging in older US Adults in the Health and Retirement Study (Eric Klopack) Educational trends in mortality in England & Wales: is the US an anomaly? (Jennifer Dowd) Stratification in higher education attainment levels and cardiovascular health among US midlife adults (Anna Zajacova) Health Across the Life Course at the Intersection of Class, Race, and Gender (Emily Dore)
11:00 - 12:15 Excelsior Bay	<b>The Peril and Promise of Place: Structural Factors and Health Outcomes</b> <b>Session Chair: Na'Taki Jelks, Spelman College</b> Differentiating relationships between historical redlining patterns and area-based health outcomes by neighborhood racial and ethnic composition (Jenny Wagner) Neighborhood Inequities and Violence: Examining of the Effects of Racialized Socioeconomic Polarization and Aggressive Policing on Youth Well-being (Julia Fleckman) Civic engagement around issues of environmental justice among Boyle Heights residents (Connie Valencia)

12:15 - 1:30	<b>LUNCH (on your own)</b>
12:30 - 1:30 Pine / Cedar / Birch / Maple	<b>MENTORING ROUNDTABLES (pre-registration required)</b>
1:30 - 2:45	<b>PANEL SESSION 2</b>
Ballroom 1	<b>Beyond Interdisciplinary: Theory and Praxis for Black Liberation and Health</b> <b>Session Chair: Marie-Fatima Hyacinthe, Yale School of Public Health</b> Toward Public Health for Black Liberation: A Critical Literature Review of Current Community-Engaged Research Methods and Theories (Marie-Fatima Hyacinthe) Race, wealth, and health: Exploring the role of reparations (Shannon Whittaker) Movement public health: how public health researchers can contribute to local movements for Black lives (Rahwa Haile)
1:30 - 2:45 Ballroom 2	<b>Characterizing gender inequality and women's empowerment and its connections with population health. Measures and evidence from Latin American cities</b> <b>Session Chair: Ana Ortigoza, Drexel University</b> Levels and urban determinants of gender inequality and women's empowerment in Latin American cities (Kari Moore) Gender inequality, women's achievements, and adolescent birth rates in 363 Latin American cities (Ariela Braverman) Women's labor force participation and gender gap mortality in 363 Latin American cities (2014-2016) (Ana Ortigoza) Gender inequality and violence in Latin American cities: Analysis of female homicide rates (2014- 2018) (Bricia Trejo)
1:30 - 2:45 Deer Lake	<b>Evolving population health tools to better incorporate health equity</b> <b>Session Co-Chair: Amanda Gatewood, Rosalind Franklin University of Medicine and Science</b> <b>Session Co-Chair: Nicholas Schmuhl, University of Wisconsin Population Health Institute</b> Methodological considerations for incorporating health disparities in the County Health Rankings model (Keith Gennuso) Finding, selecting, and deploying data for health equity research (Christine Muganda) Conceptual considerations for incorporating health equity and structural determinants of health in a model of population health (Amanda Gatewood) Transforming Narratives to Advance Health Equity: Applications to County Health Rankings (Jonathan Heller)
1:30 - 2:45 Elk Lake	<b>Structural racism, racial discrimination, and inequitable health outcomes across the life course: novel data and approaches</b> <b>Session Co-Chair: Natalie Slopen, Harvard T. H. Chan School of Public Health</b> <b>Session Co-Chair: Brittney Butler, Harvard T. H. Chan School of Public Health</b> Life course implications of racial and economic segregation on maternal hypertension among Black women (Brittney Butler) Inequitable neighborhoods and risk of death among children and their caregivers (Natalie Slopen) Racial discrimination and cognitive function among middle-aged and older adults: an instrumental variable analysis (Jourdyn A. Lawrence) Discussant: Natalia Linos, Harvard T. H. Chan School of Public Health
1:30 - 2:45 Excelsior Bay	<b>The Radical Voice in Academia: Leveraging institutional support and power to support community solutions to health inequities</b> <b>Session Chair: Ashley Gripper, Drexel University</b> Discussant: Sharrelle Barber, Drexel University Discussant: Hannah Cory, University of Minnesota Discussant: Shawnita Sealy-Jefferson, Ohio State University Discussant: Monica M. White, University of Wisconsin-Madison
2:45 - 3:15	<b>BREAK</b>
3:15 - 4:30	<b>ABSTRACT CONCURRENT SESSION 4</b>
Excelsior Bay	<b>Adolescence and Early Adulthood: Critical Periods for Life Course Health and Health Risk Behaviors</b> <b>Session Chair: Carlyn Graham, Penn State University</b> Adolescent mental health, academic performance, and school behavior after grandparental bereavement (Michelle Livings) Racial/Ethnic Heterogeneity in Parental Wealth and Substance Use from Adolescence to Young Adulthood (Sicong Sun) Defining Despair: Assessing Different Domains of Despair and their Association with Substance Misuse and Suicidality in Early to Middle Adulthood (Iliya Gutin) Adolescent Scholastic Profiles and Health in Midlife (Elizabeth Lawrence)
3:15 - 4:30 Deer Lake	<b>Biological Embedding of Social Adversity</b> <b>Session Chair: Lauren Gaydosh, University of Texas at Austin</b> Cross-sectional associations between prenatal depressive symptomology and the gut microbiome during pregnancy: Evidence from Cebu, Philippines (Elijah Watson) Neighborhood and school characteristics associated with biological pathways and physical health disparities: A prospective longitudinal study in low-income school-aged children (Samantha Gailey) Feeling Inequality: How Subjective Social Status during early adulthood impacts Allostatic Load in US adults (Nafeesa Andrabi) Biological age mediates the effects of perceived neighborhood disadvantage on heart failure risk among African Americans in the ARIC and JHS cohorts (Ganga Bey) Perceived Neighborhood Characteristics and C-Reactive Protein in Diverse Older U.S. Adults: The Role of Latino Ethnicity and Nativity (Marina Armendariz)

3:15 - 4:30 Ballroom 1	<b>Empirical evaluation of structural factors in the study of health equity and population health</b> <b>Session Co-Chair: Anusha Vable, University of California, San Francisco</b> <b>Session Co-Chair: Haobing Qian, University of California, San Francisco</b> <b>Session Co-Chair: Aayush Khadka, University of California, San Francisco</b> Mechanisms of racialized neoliberalism: How U.S. policy has created racial health inequities (Maren Spolum) The Role of the Public Charge Rule on US Citizen Children's Access to Health Services (Cynthia Pando) Lifecourse Earned Income Tax Credits (EITC) and Dementia Risk-A Sequence Analysis Approach (Haobing Qian) School suspension and expulsion predict higher dementia risk in late life with implications for racial health inequities: Findings from the National Longitudinal Survey of Youth 1979 Cohort (Catherine Duarte)
3:15 - 4:30 Ballroom 2	<b>Methodological approaches for policy evaluation in population health</b> <b>Session Chair: Ana Diez Roux, Drexel University</b> Moving the Needle: Impact of a Vaccination Reward Lottery on COVID-19 Vaccine Uptake in Louisiana (Yin Wang) Effects of increased minimum wages on depressive symptoms and suicidal behavior in South Korea (Chungah Kim) Racial disparities in cardiovascular mortality risk under a hypothetical U.S. federal minimum wage increase: 2008-2018 (Audrey Renson) The Unexpected Effects of Structural Sexism on U.S. State Suicide Rates in the Midlife (Julene Cooney)
3:15 - 4:30 Elk Lake	<b>Structural Factors</b> <b>Session Co-Chair: Cynthia Colen, The Ohio State University</b> <b>Session Co-Chair: Morgan Philbin, Columbia University</b> State-level immigration policies and prenatal care among US and foreign born Latinx individuals in the United States (US): 2014-2019 (Morgan Philbin) The linkage between racialized police violence and birth outcomes: Do spatial and social proximity to the shooting and the victim matter? (Tongtan Chantarat) How Black women in the Midwest define and experience structural racism as it relates to health (Alexandria Kristensen-Cabrera) Mental Health Scares Me the Most: Employment Discrimination and Mental Health Outcomes Among Somali Young Adults in the U.S. (Ashley Houston)
5:00 - 6:00 Ballroom 3 & 4	<b>NETWORKING RECEPTION</b>

## FRIDAY, SEPTEMBER 23, 2022

8:00 - 11:00 Atrium	<b>CONFERENCE REGISTRATION</b>
9:00 - 10:30 Ballroom 1 & 2	<b>PLENARY 3</b> <b>Session Chair: Mark Hayward, University of Texas at Austin</b> Mentoring Award Winner: Alexander Tsai, Harvard University The Milbank Quarterly Early Career Award Winner: Merlin Chowkwanyun, Columbia University Postdoctoral Award Winner: Kathryn Leifheit, University of California, Los Angeles Student Award Winner: Tongtan Chantarat, University of Minnesota
	<b>Invited Panel 3: "How We Make Evidence Matter"</b> <b>Panel Chair: Kat Theall, Tulane University</b> Session Moderator: Nathaniel Anderson, University of California, Los Angeles Panel Speaker: Lauren Supplee, William T. Grant Foundation Panel Speaker: Kyeland Jackson, Report for America Panel Speaker: Joia Crear-Perry, National Birth Equity Collaborative
10:30 - 11:00	<b>BREAK</b>
11:00 - 12:15 Elk Lake	<b>PANEL SESSION 3</b> <b>Charting a Research Agenda on Structural Racism and Latinx Health</b> <b>Session Chair: Aresha Martinez-Cardoso, University of Chicago</b> Embodying Racism: Charting a Research Agenda on Structural Racism and Latinx Health (Aresha Martinez-Cardoso) A Burgeoning Focus on Structural Racism in Public Health: Towards Systems Transformation or Racial Capitalism? (Alana Lebron) Unpacking Racial Gradients & Turning Towards Assessment of Structural Racism in Population Health Inequities among U.S. Latinx Populations (Kasim Ortiz)

11:00 - 12:15 Deer Lake	<b>Housing and Population Health: Innovative Methods and Approaches</b> <b>Session Chair: Andrew Felon, Penn State University</b> Eviction as a Community Health Exposure (Gabriel L. Schwartz) Population Health Implications of Cost-Related Moves among California Renters (Katherine Chen) Eviction, Mental Health, and Emergency Department Use in New Haven, CT (Patrick Smith) Universal Access to Counsel and Adverse Birth Outcomes in New York City (Kathryn Leifheit) Rental Assistance Impacts on Fruit and Vegetable Consumption (Whitney Denary)
11:00 - 12:15 Excelsior Bay	<b>Measuring Structural Inequities: An Exploration of Current Methods and the New Frontier</b> <b>Session Chair: Dimpho Orionzi, University of California, San Francisco</b> Policy Analysis as a Tool for Estimating the Health Effects of Structural Marginalization (Catherine Duarte) What's the Situation? Qualitative Methods for Examining Structural and Individual Effects of Racism (Dimpho Orionzi) Structural racism and health: An overview on measurements for studying health inequities (Mahader Tamene) Exposure to area-level structural racism and risk of adverse birth outcomes among US-born and foreign-born Black birthing people in California (Safyer Mckenzie-Sampson)
11:00 - 12:15 Ballroom 2	<b>The Embodiment of the Social Environment in Biological Systems of Aging</b> <b>Session Co-Chair: Rebecca Stebbins, King's College London</b> <b>Session Co-Chair: Grace Noppert, University of Michigan</b> Mitochondria and Social Stress: Implications for Population Health (Kate Duchowny) Examining Neighborhood Characteristics and Cognitive Functioning: The Role of C-Reactive Protein across Race/Ethnicity and Residential Location (Amy Thierry) Patterns and Life Course Determinants of Black-White Disparities in Biological Age Acceleration: A Decomposition Analysis (Courtney Boen)
11:00 - 12:15 Ballroom 1	<b>The Race Against Rot: Serious Games for Healthy Equitable Food Systems of the Future</b> <b>Session Co-Chair: Amy Trubek, University of Vermont</b> <b>Session Co-Chair: Caitlin Morgan, USDA ARS Food Systems Research Center</b> No One Can Afford This Food System (Amy Trubek) Building a Serious Game Across Disciplinary Differences (Caitlin Morgan) Application of Serious Games to Promote Health Equity (Julia Wolfson)
12:15	<b>Meeting Adjourned</b> Thank you for attending the 2022 IAPHS Conference! Join us for the 2023 IAPHS Conference in Baltimore, Maryland on October 2-5, 2023! Visit <a href="https://iaphs.org">iaphs.org</a> for more information

# Save the Date!

## #IAPHS2023

*"Gender, Sexuality, and Health Across the Lifecourse: Current Challenges and Opportunities for Population Health and Health Equity"*

**October 2-5, 2023**  
**Baltimore, Maryland**

Abstract & Panel  
Submissions

December 6, 2022 –  
March 6, 2023

Award  
Nominations

December 6, 2022 –  
March 20, 2023



Visit <https://iaphs.org> for more information

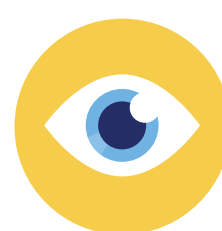


The Centers for Medicare & Medicaid Services Office of Minority Health (CMS OMH) is one of eight offices of minority health within the U.S. Department of Health and Human Services (HHS). CMS OMH works with local and federal partners to eliminate health disparities while improving the health of people from all minority populations, including members of religious minorities; lesbian, gay, bisexual, transgender, and queer (LGBTQ+) persons; persons with disabilities; persons who live in rural areas; and persons otherwise adversely affected by persistent poverty or inequality.



## OUR MISSION

CMS OMH will lead the advancement and integration of health equity in the development, evaluation, and implementation of CMS's policies, programs, and partnerships.



## OUR VISION

All those served by CMS have achieved their highest level of health and well-being, and we have eliminated disparities in health care quality and access.



## CMS FRAMEWORK FOR HEALTH EQUITY

CMS OMH released the **CMS Framework for Health Equity** to address health disparities as a foundational element across all our work – in every program and across every community. Using five priority areas, CMS will use this framework to design, implement, and operationalize policies and programs to support health for all people served by our programs, eliminating avoidable differences in health outcomes experienced by people who are disadvantaged or underserved, and providing the care and support that our enrollees need to thrive. The framework's structure consists of five priority areas:

- **Priority 1:** Expand the Collection, Reporting, and Analysis of Standardized Data
- **Priority 2:** Assess Causes of Disparities Within CMS Programs and Address Inequities in Policies and Operations to Close Gaps
- **Priority 3:** Build Capacity of Health Care Organizations and the Workforce to Reduce Health and Health Care Disparities
- **Priority 4:** Advance Language Access, Health Literacy, and the Provision of Culturally Tailored Services
- **Priority 5:** Increase All Forms of Accessibility to Health Care Services and Coverage

## OUR WORK



**The Data Analysis initiative** provides useful information for targeting quality improvement activities and resources, monitoring health and drug plan performance, and advancing the development of culturally and linguistically appropriate quality improvement interventions and strategies. As part of this initiative, CMS OMH develops [Data Snapshots](#) and [Data Highlights](#), which examine policy issues and data from CMS and other federal sources aimed at eliminating health disparities.



Through its **Rural Health initiative**, CMS OMH is developing programs and policies that ensure rural Americans have access to high quality care, support rural providers and not disadvantage them, address the unique economics of providing health care in rural America, and reduce unnecessary burdens in a stretched system to advance our commitment to improving health outcomes for Americans living in rural areas.



CMS OMH administers the **Minority Research Grant Program**, which supports researchers at minority serving institutions that are exploring how CMS can better meet the health care needs of racial and ethnic minorities, people with disabilities, sexual and gender minorities, and rural populations.



**Health Equity Technical Assistance** is available to health care organizations ready to systematically take action on health disparities. The program offers personalized coaching and resources on developing a health equity strategic plan; resources on improving care for the populations we represent, and rural populations; data collection and analysis; and help developing a language access plan.



## COVERAGE TO CARE

is an initiative to help people understand their health coverage and connect to the primary care and the preventive services that are right for them, so they can live a long and healthy life.

### Contact us

7500 Security Boulevard, Baltimore, MD 21244  
[go.cms.gov/cms-omh](https://www.cms.gov/cms-omh)  
[omh@cms.hhs.gov](mailto:omh@cms.hhs.gov)

[Subscribe to our listservs here](#)

Paid for by the U.S. Department of Health and Human Services  
May 2022





**Associate Professor  
Non-Tenure Line (Teaching)**

The Stanford University School of Medicine seeks highly qualified candidates for a full-time Non-Tenure Line (Teaching) faculty position in the Department of Epidemiology and Population Health (EPH). EPH is a basic science department within the School of Medicine. EPH is the primary hub for epidemiologic teaching and research at Stanford. The teaching content includes clinical research, with MS and PhD degree programs, an undergraduate co-terminal master's degree, an on-line certificate program, and strong ties to numerous training and research programs throughout the Medical School and University. Stanford is a highly interdisciplinary university, with the medical school sharing the same unitary campus with departments and programs in a wide range of quantitative, social, physical, and biologic sciences. The major criterion for appointment for faculty in the Non-Tenure Line (Teaching) is evidence of high-level performance as a teacher for whose special knowledge and pedagogical skills a programmatic need exists. The terms of appointment in this line are generally 5 years, renewable without limit. A doctoral level degree in Epidemiology or a related field is required, with a strong emphasis on exemplary teaching. There is no requirement to conduct research in this faculty line, but research experience is highly desirable.

We seek outstanding applicants with demonstrated teaching excellence and creativity in population-based research, clinical epidemiology, and clinical research, with strong methodologic training. Candidates should demonstrate experience and success in teaching introductory and intermediate epidemiologic methods to a wide range of students, including undergraduates, masters and doctoral-level epidemiology students, medical students, research fellows and medical faculty. Experience in collaborative teaching enterprises, along with excellent curriculum coordination, management, and communication skills, are expected. Knowledge of other biologic disciplines is a strength. Demonstrated success in training program leadership and administration is highly desirable. Qualified applicants should send (1) a letter that describes teaching experience and leadership and (2) a curriculum vitae, addressed to Professor Abby King, PhD, Chair, Stanford Epidemiology Search Committee. Candidates are also expected to supply the names of three references. Send applications electronically to <https://facultypositions.stanford.edu/cw/en-us/job/493464>. Review of applicants will begin on by September 25, 2022 and applications will be considered until the position is filled.

The Epidemiology and Population Health Department, School of Medicine, and Stanford University value faculty who are committed to advancing diversity, equity, and inclusion. Candidates may optionally include as part of their research or teaching statement a brief discussion of how their work will further these ideals.

Stanford is an equal employment opportunity and affirmative action employer. All qualified applicants will receive consideration for employment without regard to race, color, religion, sex, sexual orientation, gender identity, national origin, disability, protected veteran status, or any other characteristic protected by law. Stanford welcomes applications from all who would bring additional dimensions to the University's research, teaching, and clinical missions.



MINNESOTA POPULATION CENTER



Center for  
Antiracism Research  
for Health Equity

---

UNIVERSITY OF MINNESOTA

The logo for the Life Course Center is set against a dark blue background. It features the words 'LIFE COURSE' in large, bold, white, sans-serif capital letters. Below this, the word 'CENTER' is written in a smaller, white, sans-serif font. The text is centered and partially enclosed by two thin, light blue circular lines that form an arc above and below the words.